



SUNNINGDALE

Education for Life

“TEACHING IS HIGHLY EFFECTIVE, ENSURING PUPILS ARE WELL MOTIVATED AND ENGAGED DURING LESSONS”

OFSTED



SPECIAL? OF COURSE!

Sunningdale is the Children's Services sole specialist provider for primary and nursery children with profound, multiple and severe learning needs within the City of Sunderland - that makes it very special indeed. We are respectful of the individual needs of every pupil and design a personalised curriculum around identified needs. We are special too in that we offer a range of flexible placements including dual placements so if it is right for a child he/she may share a placement by attending both a mainstream provision and a specialist provision like Sunningdale.

PRIMARY (AND PRE-SCHOOL)

That's a school right? Sunningdale provides for boys and girls within the age range of 2-11 years and we meet the needs of a wide variety of pupils with learning difficulties.



“WE ARE SO THANKFUL AND PRIVILEGED TO BE ABLE TO SEND OUR CHILD TO THIS SCHOOL”

Jennifer's Mum



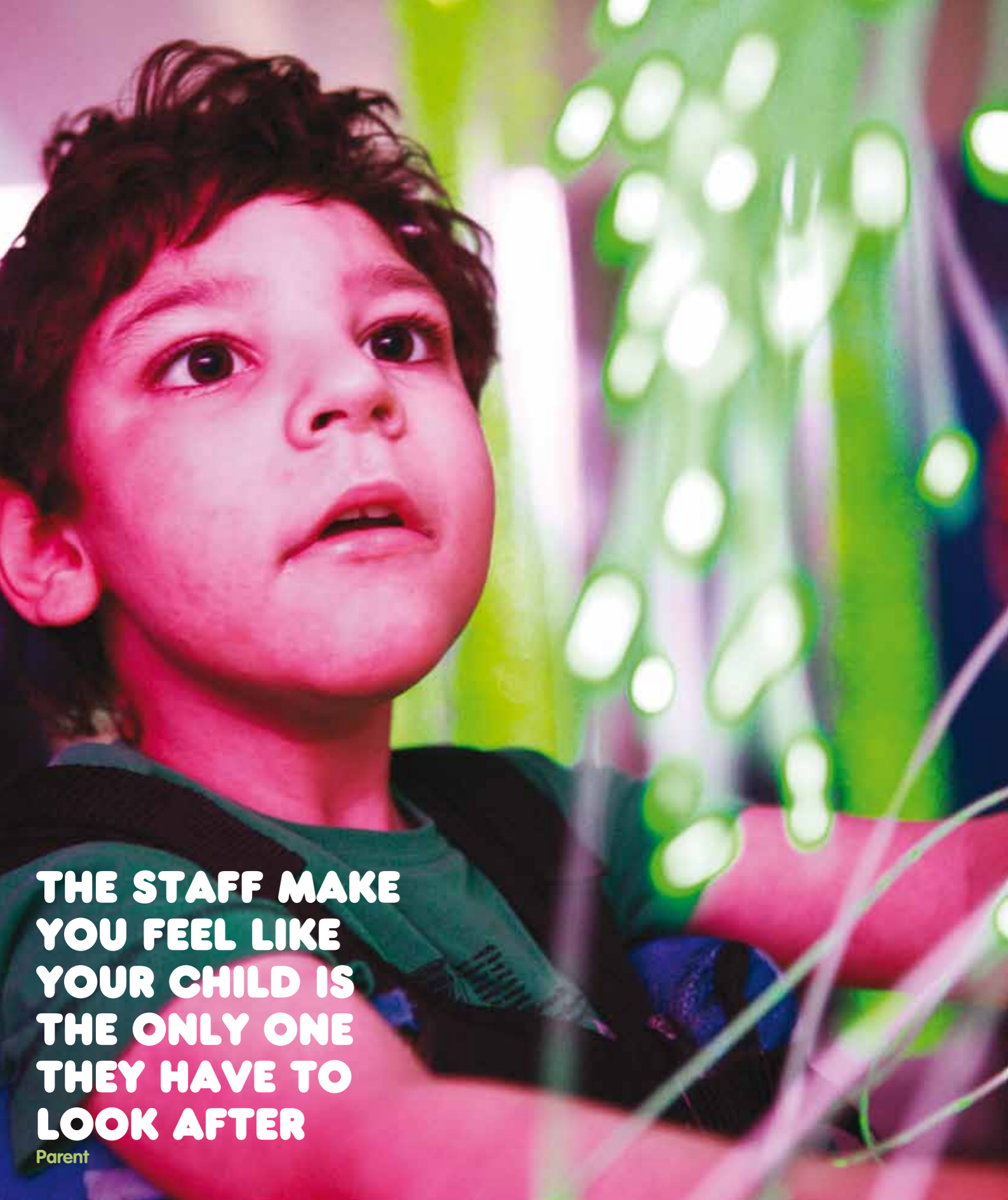
“SUNNINGDALE IS THE BEST THING THAT HAS HAPPENED TO OUR FAMILY”

Annabelle's Mum & Dad



“EVERYTHING THAT IS PLANNED AND CARRIED OUT IN THE SCHOOL IS TO PUT THE INDIVIDUAL PRIORITIES OF THE CHILDREN FIRST”

Investors in People



**THE STAFF MAKE
YOU FEEL LIKE
YOUR CHILD IS
THE ONLY ONE
THEY HAVE TO
LOOK AFTER**

Parent



MULTI-AGENCY

Who's involved? Sunningdale works with an extensive range of other professionals to ensure the best support and care for pupils and families. Sunningdale has a multi-agency approach to learning and childcare; health, social care and education work in harmony under the same roof which means parents rarely have to take their children out of school for routine treatment and consultations. Appliance clinics, consultant surgeries, communication assessments, physiotherapy, occupational therapy and speech therapy regularly take place within school. We have two qualified nurses on site who oversee children's medical needs and our link social worker is regularly available for advice and support. We also have direct access to essential support when required.

THERAPIES

Sunningdale uses a number of therapies to support the delivery of the curriculum and many children benefit from their use on a regular basis. The therapies form part of each child's personalised curriculum and this enables every child to access the curriculum at their own level. Some of the therapies delivered in Sunningdale are hydro, sound, light, play, aroma, rebound and massage.

COMMUNICATION

Without effective communication no-one learns. This is the heart of everything we do at Sunningdale. We have considerable expertise in developing communication systems through such diverse media as Picture Exchange Communication (PECs), Intensive Interaction, Makaton (signing and symbols) and a whole range of therapies.

**GREAT SCHOOL,
GREAT PEOPLE,
GREAT FACILITIES,
GREAT VIBE.
A JOY.**

Cameraman for BBC TV



SUPPORTING PARENTS

Our Parent Group is run by parents for parents and meets regularly to support fund raising and to arrange social events. It also works alongside the City's parent/carer forum which meets monthly at Sunningdale.

EARLY YEARS

How early is early? Sunningdale's early years' provision takes children from just 2 years of age. We believe early intervention provides the best possible start for a child and helps pave the way for future success. However, we recognise that at a young age parent/carers like to choose how often their child attends school so we offer both full and part time flexible places. We link with Children's Centres and the Early Years Learning Team and offer a full and comprehensive service in delivering the Early Years Foundation Stage. Parents are welcomed as active partners in their child's learning experiences. The Early Years Facility is served by an excellent staffing ratio which allows for significant personal attention.



PARENTS & SCHOOL

Parents are valued in Sunningdale. We take our relationships with parents seriously and they play an active part in the running of the school. We don't just say it - we do it! Parents are welcome into school at any time and members of staff are always available to talk with them. However, we also provide additional opportunities to share information in 'open afternoons/evenings and therapy 'surgeries' which play an important role in supporting parents. Representation on both the Governing Body and the Curriculum Steering Group ensures parent/carers contribute fully to school life. Parents are also welcome to our regular family assemblies and we offer frequent opportunities for parents to participate in support programmes like the Family Nurturing and Share the Challenge Programmes.



SUNNINGDALE IS A VERY SPECIAL PLACE AND ONE WE COULD NOT DO WITHOUT

Adam's mum

SUNNINGDALE: SUPPORTING CHILDREN ACROSS SUNDERLAND

Sunningdale is more than just a school. It currently uses its skills and expertise to lead and manage two City intervention services which work to support the children of Sunderland.

EXTENDED SCHOOL

Here at Sunningdale we are committed to the provision of opportunities for children outside the school day. We not only offer clubs after school including our Youth Club and Rebound Club where children can attend independently but we also have a Sensory Integration Club where parents can work alongside skilled staff to develop their child's physical skills. Our lunchtime clubs are also extremely popular and children are encouraged on a daily basis to experience clubs such as 'Let's get cooking,' Yoga, Arts and Crafts, Story time and 'Fit for Fun.'

We know how important support for parents/carers and children is especially at weekends and holiday times and with this in mind we now provide a regular Saturday Club and holiday play schemes for our children. Both are extremely popular.

PORTAGE

What's that? In essence, it is a home intervention learning service for pre-school children. The Portage service is for Under 3s who have a significant learning difficulty. Skilled workers from education, health and Children's Centres visit children and parents in their homes to support learning. Some children may need our Enhanced Portage provision where parent and child can access the expertise and facilities offered within Sunningdale on a part-time flexible basis. Sunningdale is very proud of its ability to work with children and babies across the whole City of Sunderland through the Portage provision.

PROFESSIONAL DEVELOPMENT

This is taken very seriously by Sunningdale. All staff members are highly skilled and continuously exposed to further professional opportunities.

LANGUAGE AND LEARNING PARTNERSHIP

This is an intervention service supporting children who have a language and learning need within mainstream schools across Sunderland. A skilled team based at Sunningdale provides advice and support enabling some children to remain in mainstream education.

SUPPORT FOR SUNNINGDALE

It takes a lot of hard work. Sunningdale is supported by a number of organisations - local, regional and national. In addition, Changing Lives (the Sunningdale charity) and Friends of Sunningdale organise a wide range of regular social events which support the school.



IF YOU WOULD LIKE TO KNOW MORE ABOUT SUNNINGDALE PLEASE CONTACT US:

HEADTEACHER

Mrs C. Wright

DEPUTY HEAD

Mrs J. Marley

CHAIR OF GOVERNING BODY

Mrs Toni Mathieson

ADDRESS

Sunningdale School
Shaftoe Road, Springwell,
Sunderland, SR3 4HA, England

TEL (0191) 553 5880

FAX (0191) 553 5882

EMAIL sunningdale@schools.sunderland.gov.uk

WEB www.sunningdaleschool.com

SAFEGUARDING

Parents should be aware that the school would take any reasonable action to ensure the safety of its pupils/students.

In cases where the school has reason to be concerned that a child may be subject to significant harm, ill-treatment, neglect or other forms of abuse, staff have no alternative but to follow SSCP (Sunderland Safeguarding Children Procedures) Child Protection Procedures and inform Children's Services Social Care of their concern.

Designated Person:

Mrs C. Wright

Deputy Designated Person:

Mrs J. Marley

Governing Body Designated

Person: Peter Dawson

Registered Charity: No. 1080570
Changing Lives - The Sunningdale Charity